

Ordering information

Shape description		4F	5F	6F
Judkins	JL3	14102001	15102001	16102001
	JL3.5	14102101	15102101	16102101
	JL4	14102201	15102201	16102201
	JL4.5	14102301	15102301	16102301
	JL5	14102401	15102401	16102401
	JL6	14102501	15102501	16102501
	JR3	14102601	15102601	16102601
	JR3.5	14102701	15102701	16102701
	JR4	14102801	15102801	16102801
	JR4.5	14102901	15102901	16102901
	JR5	14103001	15103001	16103001
	JR6	14103101	15103101	16103101
Williams Sones	3DS	14100001	15100001	16100001
	SONES 1	14105801	15105801	16105801
	SONES 1/2	14105901	15105901	16105901
	SONES 2	14106001	15106001	16106001
Gamal Amplatz	SONES 2/2	14106101	15106101	16106101
	GAMAL	14101201	15101201	16101201
	AL 1	14100201	15100201	16100201
Multi Purpose	AL 2	14100301	15100301	16100301
	AL 3	14100401	15100401	16100401
	AR1MOD	14100601	15100601	16100601
	AR2MOD	14100801	15100801	16100801
	ARMOD	14100901	15100901	16100901
	MPA	14103601	15103601	16103601
	MPA/2	14103701	15103701	16103701
Radial	MPB	14103801	15103801	16103801
	MPB/2	14103901	15103901	16103901
Bypass	RAD	14105001	15105001	16105001
	TIG2	14107001	15107001	16107001
Pigtail	IM	14101701	15101701	16101701
	LCB	14103401	15103401	16103401
	RCB	14105501	15105501	16105501
	PIG 110/8	14114001	15114001	16114001
	PIG 145/110/8	14114101	15114101	16114101
	PIG 155/110/8	14114201	15114201	16114201
Duo-pack* Multipack*	PIG 130/8	14134001	15134001	16134001
	PIG 145/130/8	14134101	15134101	16134101
Duo-pack* Multipack*	PIG 155/130/8	14134201	15134201	16134201
	JR4/JL4	14200701	15200701	16200701
	JR4/JL3.5/PIG 145/8	14315101	15315101	16315101
	JR3.5/JL4/PIG/8	14316001	15316001	16316001
	3DS/JL4/PIG 145/8	14315501	15315501	16315501
	JR4/JL4	14200701	15200701	16200701
	JR4/JL4/PIG 145/8	14316301	15316301	16316301
	JR4/JL4/PIG/8	14316201	15316201	16316201
ARMOD/JL4/PIG 145/8		15315801		
	3DS/JL4/PIG/8		16315401	

* For other configurations for the Duo-packs and Multi-packs please send an email to sales@pendracare.com
Note: /2 and /8 indicate # of side holes

cardiology

Pointer

Diagnostic catheter range

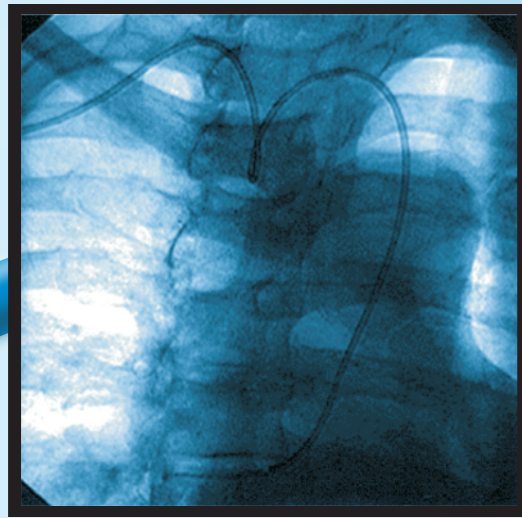
Endovascular Devices

When flexibility & control is needed...

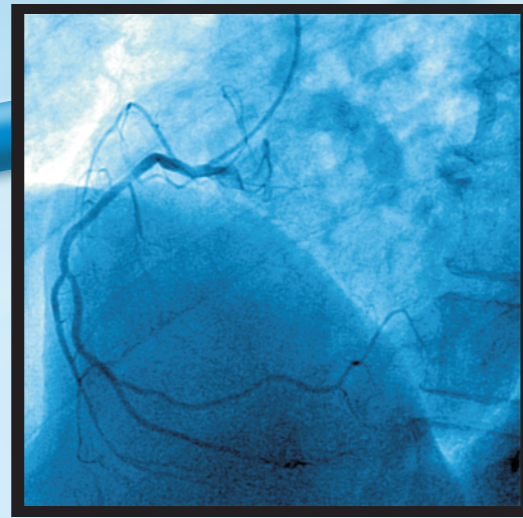



Pendracare

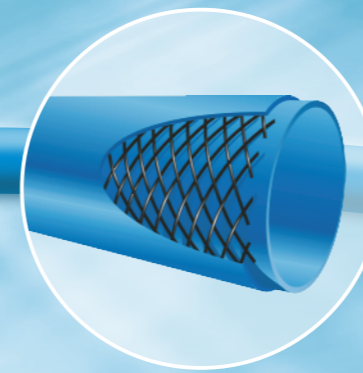
low friction



easy access



double wire stainless steel braiding



hub with grip section for optimal torque control

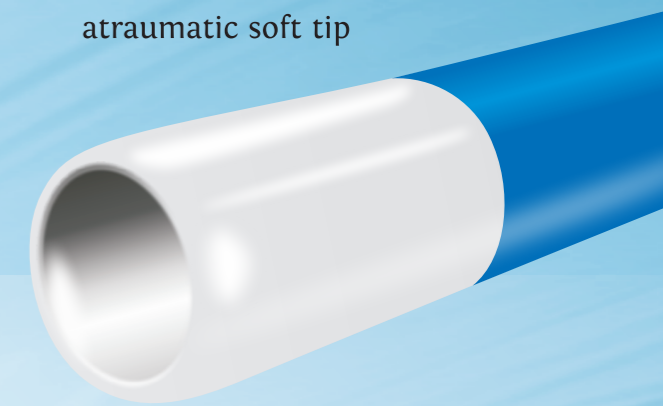
radial approach

Pointer provides easy introduction leading to lower occurrence of vessel spasms providing quick and reliable coronary vessel access.

Pointer proprietary nylon material combination resulting in unsurpassed performance:

- High flexibility
- Superior surface smoothness
- Excellent torque control

atraumatic soft tip



large inner lumen superior flow rates

technical data

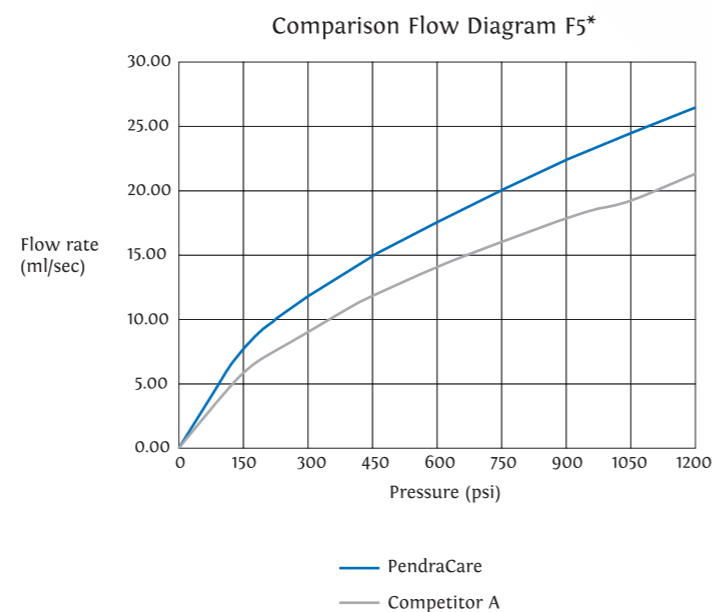
French 4	Selective	Pigtail
OD	0.055" / 1.40 mm	0.055" / 1.40 mm
ID body	0.044" / 1.12 mm	0.044" / 1.12 mm
ID tip	0.042" / 1.07 mm	0.042" / 1.07 mm

French 5	Selective	Pigtail
OD	0.065" / 1.65 mm	0.065" / 1.65 mm
ID body	0.050" / 1.27 mm	0.050" / 1.27 mm
ID tip	0.047" / 1.18 mm	0.042" / 1.07 mm

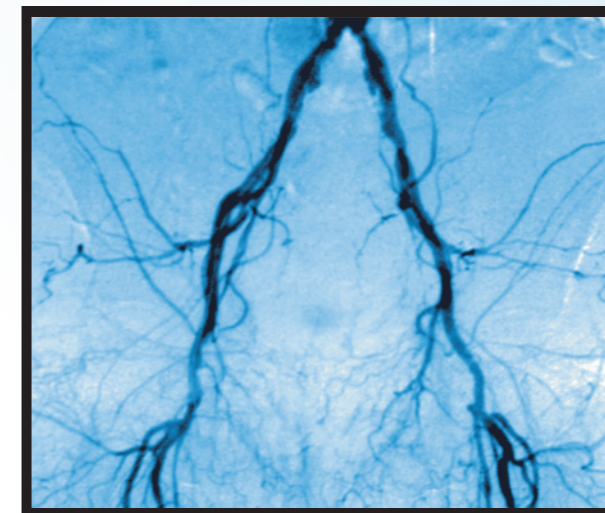
French 6	Selective	Pigtail
OD	0.079" / 2.00 mm	0.079" / 2.00 mm
ID body	0.057" / 1.44 mm	0.057" / 1.44 mm
ID tip	0.057" / 1.44 mm	0.042" / 1.07 mm

max. pressure 1200 psi / 84 bar
guide wire 0.038" / 0.97 mm

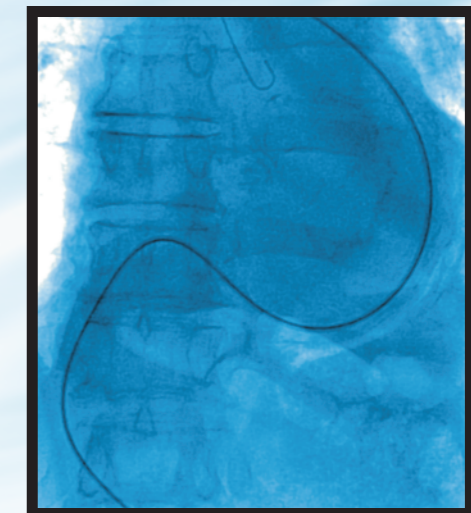
Larger inner lumens guarantees easy and complete contrast filling for optimal vessel opacification.



Pointer provides reliable kink free passage of tortuous anatomy and calcified lesions while keeping optimal torque control in the coronary arteries.



calcified



tortuous